



FILMTRANSFER

HD Telecine Datacine FILM TRANSFER 16/35 mm

features

- Real time & faster
- Camera 3 CCD / FULL HD 1920 x 1080
- Downconversion to SD
- Optical & magnetic sound
- Controls & color correction for SD & HD
- Synchronization: bi-phase, RS422
- Files & video output

Telecine Datacine Film Transfer

• SCRATCH REDUCTION SYSTEM

FILM TRANSFER is equipped with a color-integrationsphere located just above the film. The lighting of the film is diffuse rather than direct. This minimizes the appearance of scratches while maintaining a more uniform illumination of each film frame.

• LOADING

Threading is fast & easy. Your film runs gently over rollers without any drive sprockets. Tension is regulated with tension arm feedback through a potentiometer. Both feed and take-up are electronically governed by the two arms. This arrangement protects the film path by applying tension adapted to the gauge of the film. Splices are handled with ease. This system also reduces video glitches oftentimes created by splicing tape

• FORMAT CHANGES

Format changes are fast & easy: simply change the gate and the mirror-synchronizing sprocket. This procedure takes less than 1 minute.

• MOTORIZATION OF MAGNIFICATION AND FOCUS

A carriage controls the movement of the camera and the objective lens. This allows control of magnification and focus with automatic pre-sets by the software.

• FILES & VIDEO OUTPUT

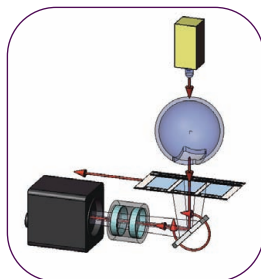
Our telecine can instantly create files such as AVI as producing HD-SDI video output

• CAPSTAN DRIVE

Our telecine utilizes a capstan drive. There is no motor driven sprocket on the **FILM TRANSFER**. This results in safer handling of your negative or positive film. No strain is produced on the perforations. There is no risk of damage to your archival film with deteriorated or shrunk perfs.

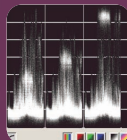
• GALVANOMETRIC MIRROR

The images are captured by a galvanometric mirror that tracks the film frame by frame, and records them with a three CCD matrix. This allows capturing of a more stable image with much greater definition.



• System of oscillating mirror with galvanometer synchronized on each film frame

Full HD
1080



TECHNICAL SPECIFICATIONS

- 16/S16 and/or 35/S35 mm
 - 4, 2* and 3-perf* 35mm formats
 - Magnetic sound 16*
 - Optical sound 16*
 - Regular/SR cyan optical red DEL sound 35*
 - embedded audio for HD-SDI*
 - Dolby SRD sound 35mm*
 - 600 m capacity
 - Capstan drive w/ naturally regulated tension by arms control high precision
 - Integrated scratch, dust reduction system : specific homogeneous light diffusion sphere
 - Superior steadiness – regulated by software
 - High quality capture : Oscillating galvanometric mirror synchronized on film running speed
 - One continuous cold white LED array (high energy and long life)
 - Camera 3CCD FULL HD 1920x1080
 - Output : AVI data HD file and AVI data SD file as downconversion and/or video HD-SDI, SD-SDI* and/or DPX data file*
 - Play & record speed 12/16/18/20/22/24/25 fps up to 50fps
 - Ultra speed rewind : 4 times to real time speed
 - Cleaning PTR rollers*
 - Archive stocks up to 2%
 - Archive stocks warped & shrinkage kit - up to 4% for 16 and/or 35mm*
 - Keycode reader*
 - Bi Phase output and genlock input synchronization, basic RS422 protocol master (slave*)
 - Advanced RS422 panel remote control telecine/VTR editing option*
 - Tangent/JL cooper panel control*
 - 19" rack-mounted
 - Including hardware : furnished with PC central unit with basic first storage, mouse, screen, keyboard, jog shuttle : play, stop, shuttle, frame per frame, fast forward, fast rewind with visible picture
 - Including Kolibri Software integrated for telecine /scanner control and color corrections
 - Scene by scene color correction system*
 - Run up time: < 1s
 - Lowest operating and maintenance cost
- * Option on request

Capture

Resolution : Full HD 1920x1080 3CCD sensor
 Output : HD-SDI data rate 1,485 Gbit/s (SMPTE 292), Single Link 4:2:2
 Format : 1080psF 23,98 / 1080psF 24 / 1080psF 25
 Horizontal Resolution : 900 TV lines,
 Quantization 14 bits External sync HD sync 0,6Vp-p 75 Ohms

Output

AVI file Full HD 1920x1080
 compressed MJPEG (800 Mo/min) or
 uncompressed YUV 4:2:2 (6 Go/min)
 or
 SD 720x576 as downconversion (MJPEG, DV, 4:2:2)
 SD format: 16/9 letterbox or 4/3 center cut
 Audio : uncompressed

DPX* Digital Picture Exchange (DPX)
 ANSI/SMPTE 268M-2003

Video* HD-SDI (SMPTE 292)
 simultaneously with SD-SDI (SMPTE 259)
 SD format : 16/9 letterbox, 16/9 anamorphic
 or 4/3 center cut Analog component signals:
 Y, B-Y, R-Y
 Composite and S-Video signal (PAL, NTSC*)
 External HD sync
 Audio : 2 channels XLR

DIMENSIONS

Width: 60 cm
Depth: 70 cm
Height: 210 cm
Crating size: 95 x 80 x 235 cm (WXHxD)
Net Weight: 190 kg
Gross weight: 370 kg (once packed)
Power: 220V or 110V single phase
 2,5 kVA, 50 or 60 Hz